

Sex Coach Nikki Presents

The Squirting Orgasm: The Anatomy Of Female Ejaculation

Copyright © The McGraw-Hill Companies, Inc. Permission required for reproduction or display.

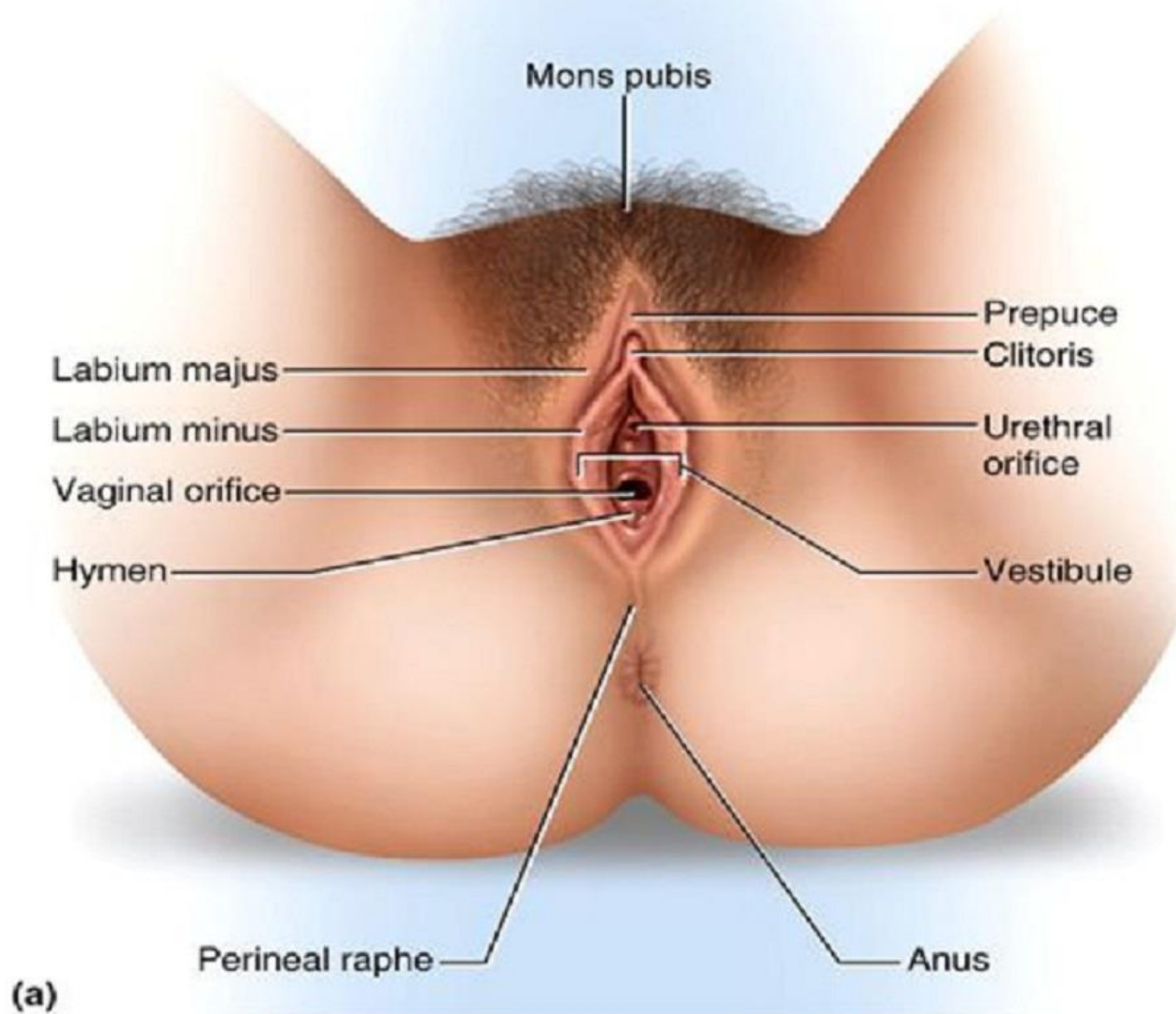
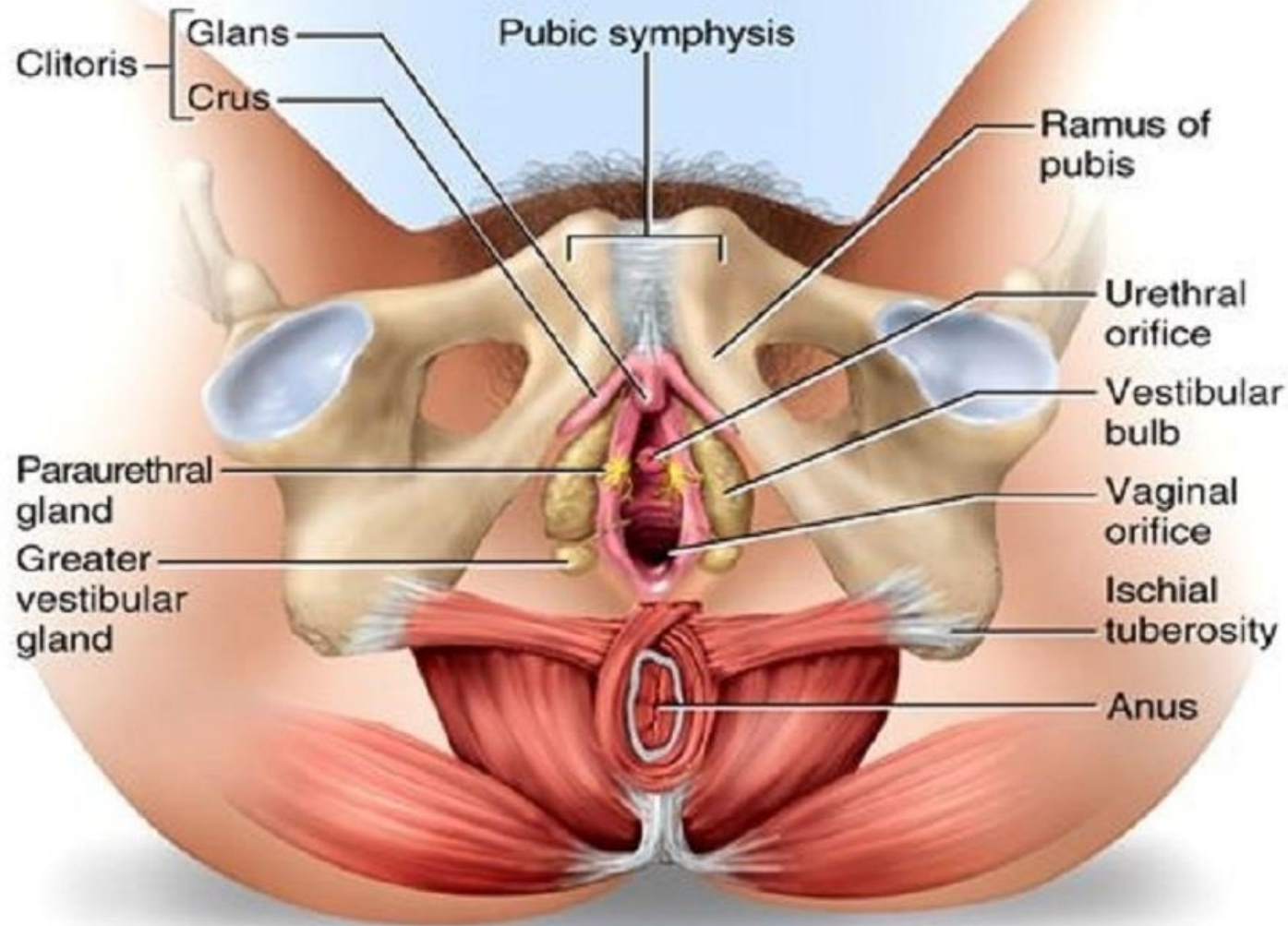
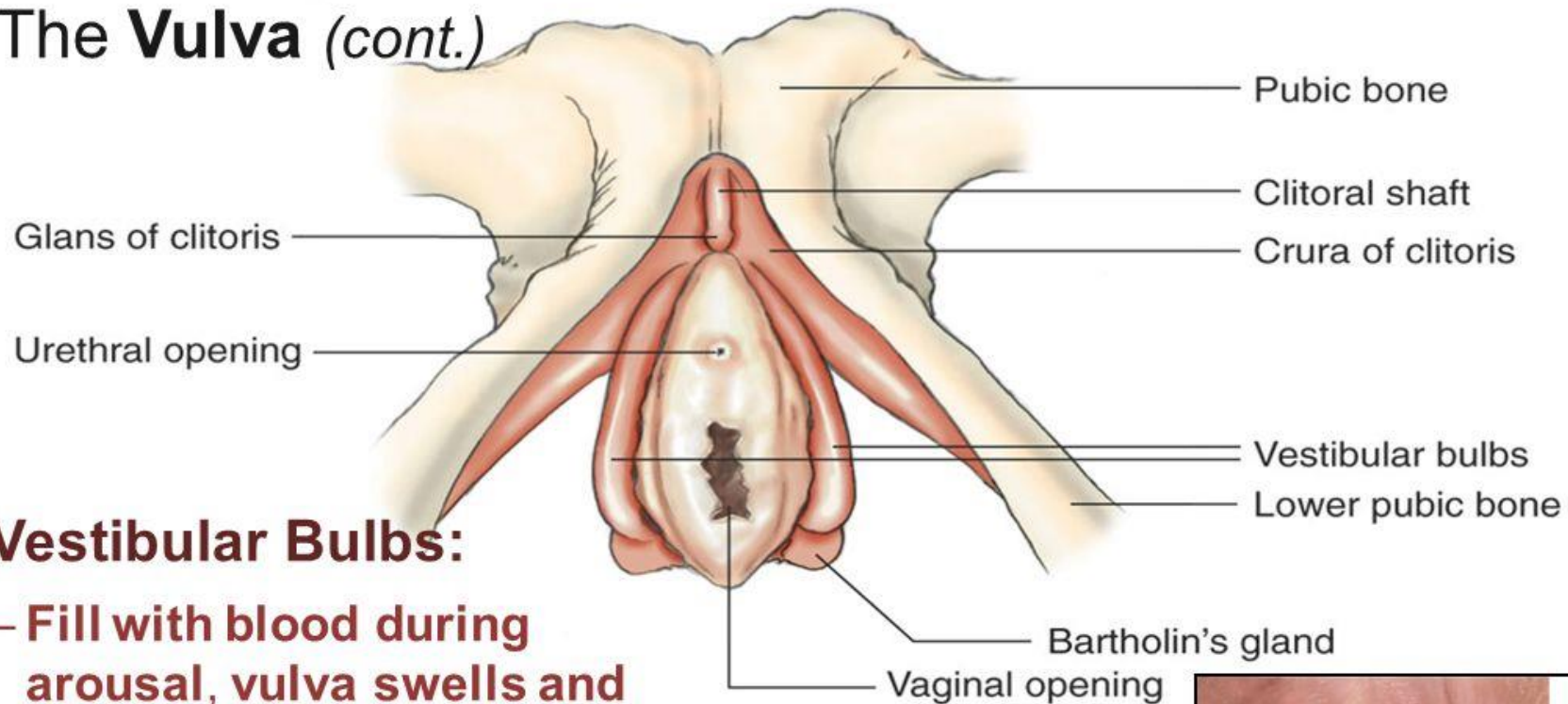


Image from <http://slideplayer.com/slide/11334237>



(b)

The Vulva (cont.)



Vestibular Bulbs:

- Fill with blood during arousal, vulva swells and vagina increases in length.

Similar in structure and function to tissue in penis that engorges during arousal, causing erection.

Bartholin's (vestigular) & **Skene's** (paraurethral) glands line outside of urethra, some ducts going into urethra -

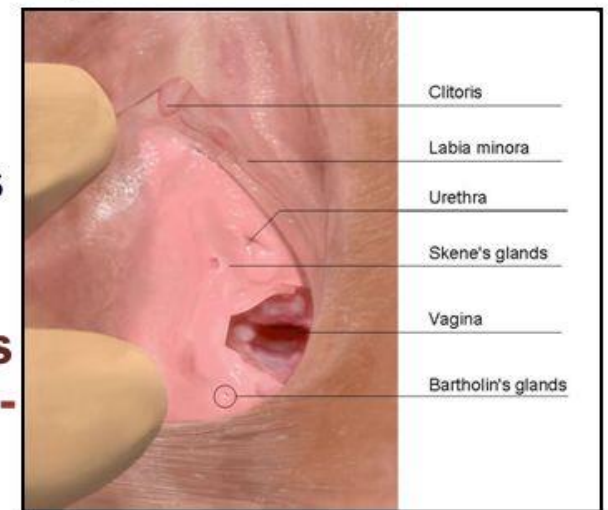


Image from [http://slideplayer.com/slide/11334237/42/images/19/The+Vulva+\(cont.\)+Vestibular+Bulbs:.jpg](http://slideplayer.com/slide/11334237/42/images/19/The+Vulva+(cont.)+Vestibular+Bulbs:.jpg)

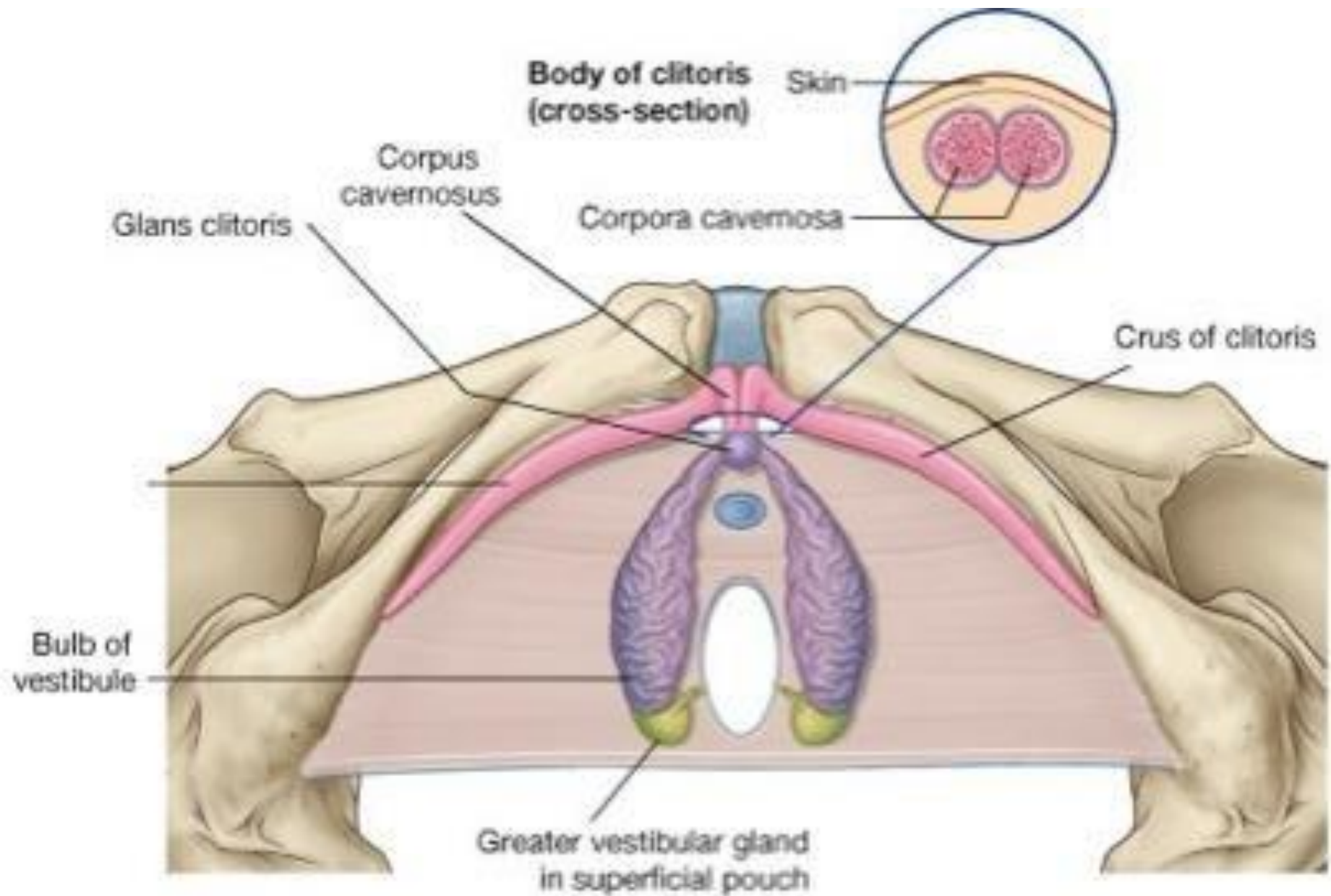


Image from <https://www.studyblue.com/#flashcard/view/2460919>

The female prostate

Women have prostate gland tissue as well as men, although the amount seems to vary markedly between individuals. In women who ejaculate, the prostate is the most likely source of fluid

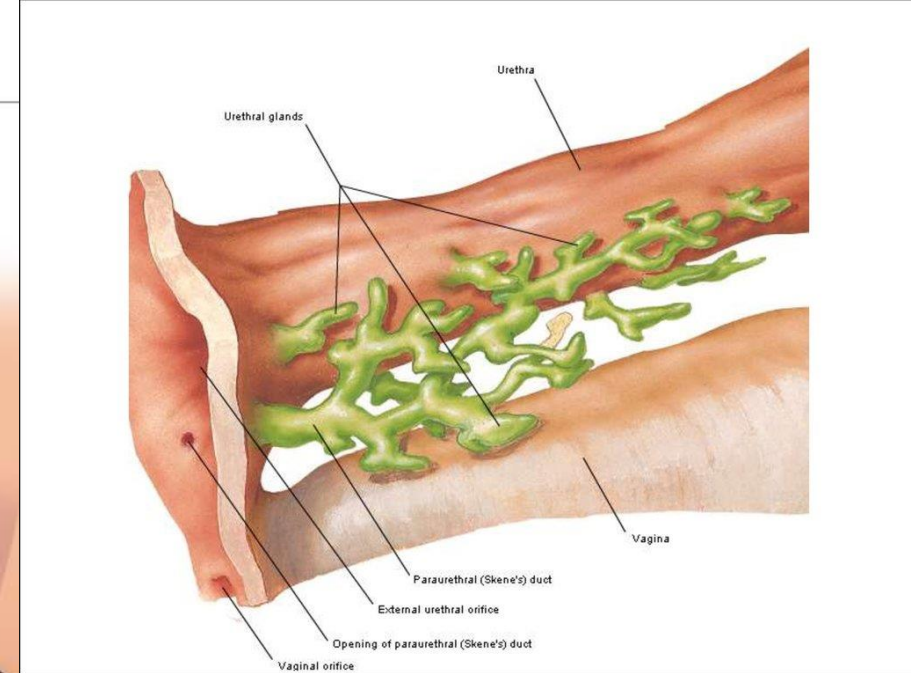
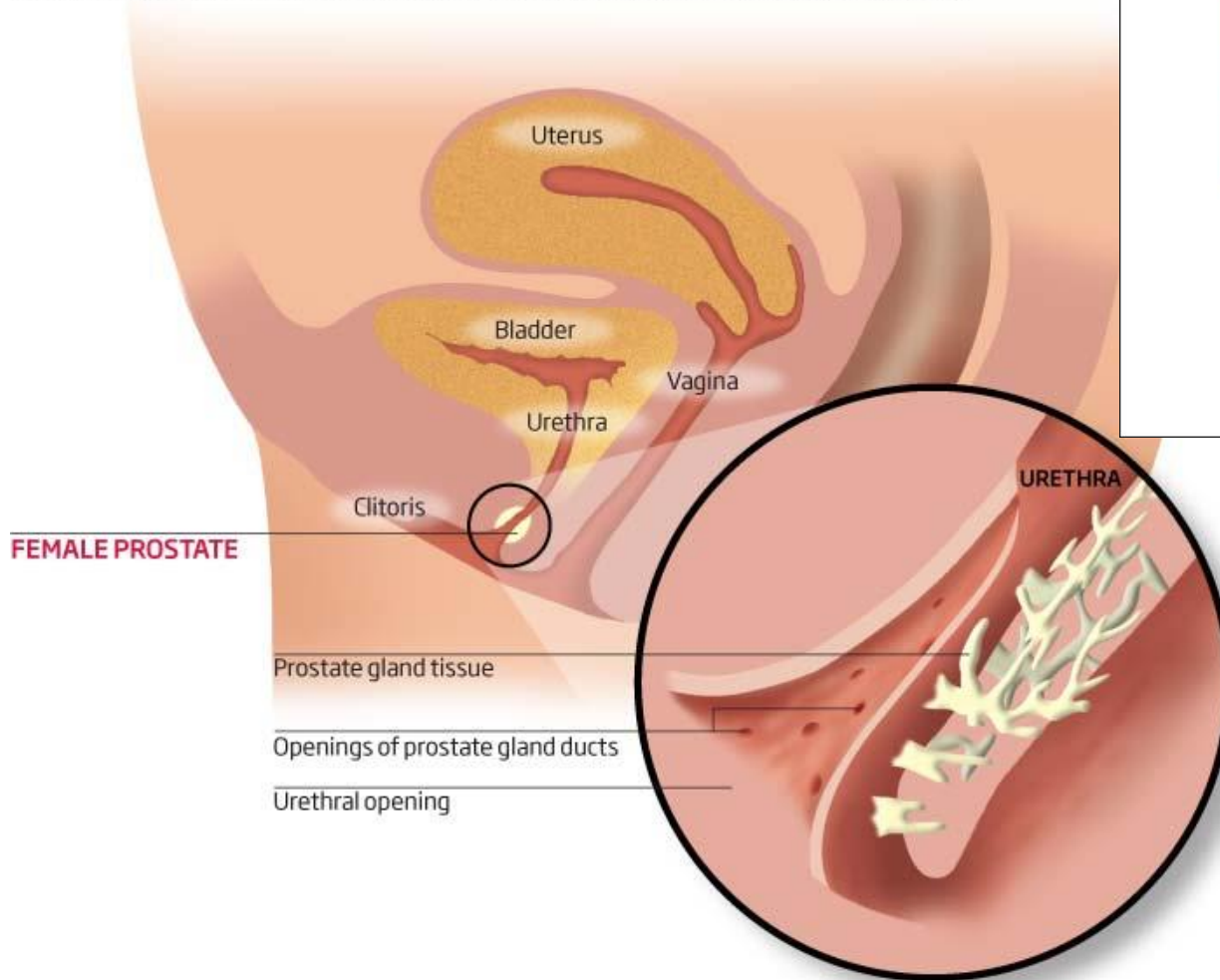


Image from <http://www.sciencedirect.com/science/article/pii/S0262407909614500>

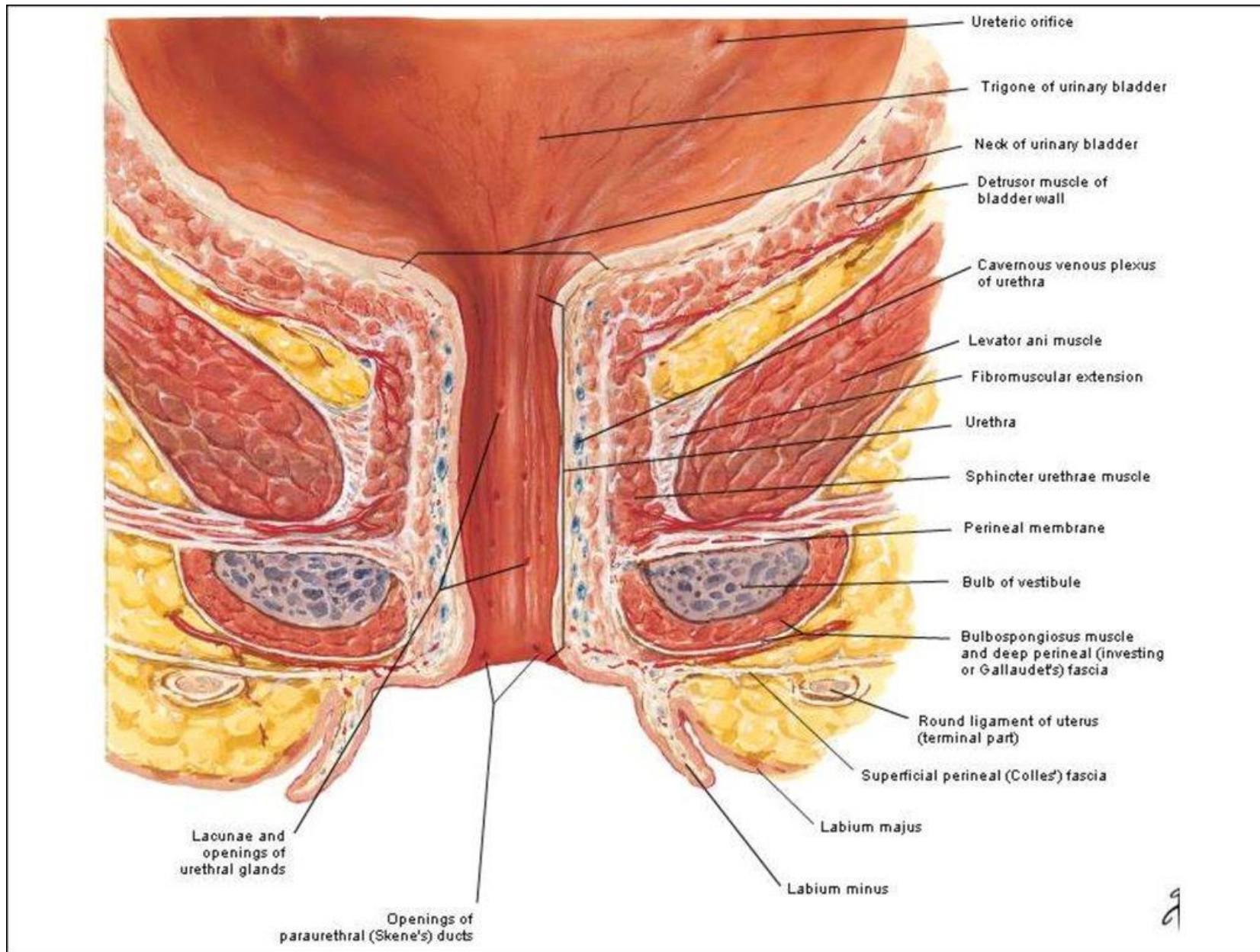
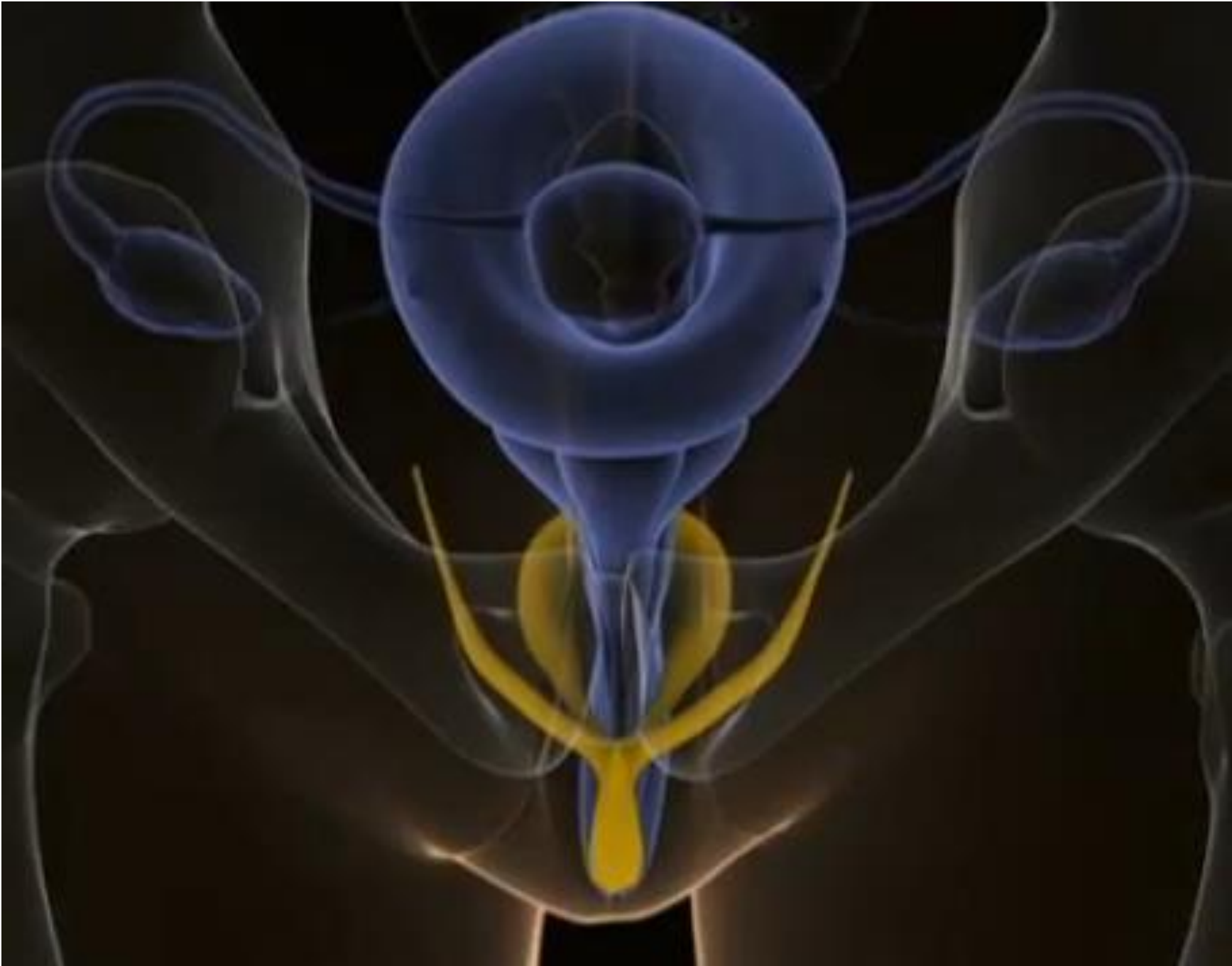


Image from <http://ppt-online.org/104095>

From <http://blog.museumofsex.com/the-internal-clitoris/>





For more information visit NikkiLundberg.com. For explicit how-to videos visit NikkisLessons.com.

I also work with people through email, on the phone, on video chat and in person.
See rates at www.nikkilundberg.com.

Please contact me if you would like some private attention.

Make It A Sexy Day!

Nikki Lundberg

(702) 674-6606

Nikki@NikkiLundberg.com

